

Veneers

With Porcelain Veneers that are made by Dr. Allan Fox, you can enhance the colour, shape and alignment of your smile.

Porcelain Veneers are life-like porcelain sheets custom made and bonded to the front surfaces of your teeth

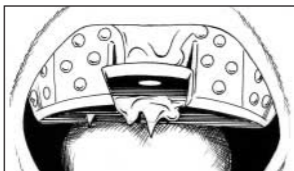
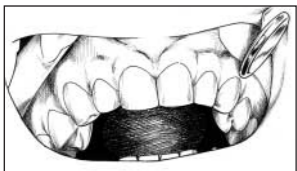
The STEPS of a PORCELAIN VENEER PROCEDURE

- Consultation diagnosis and aesthetic evaluation (clinical, study model and radiographic examination).
- First appointment. Preparation of teeth involved including impressions, temporization and shade selection.
- Lab fabrication of veneers.
- Insertion appointment.



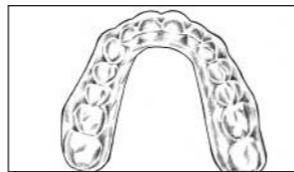
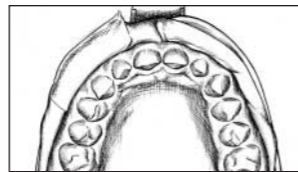
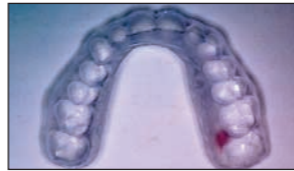
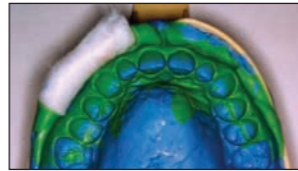
Teeth Prepared

Close up of preparation



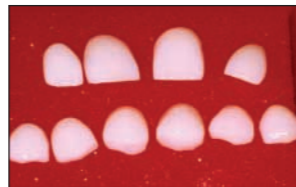
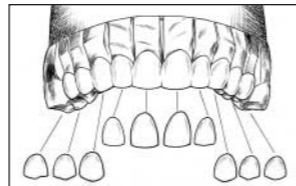
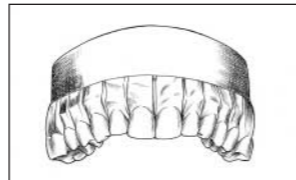
All teeth have been prepared

Impression material setting

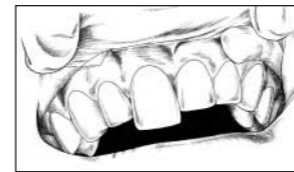
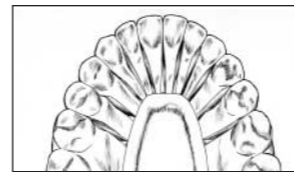
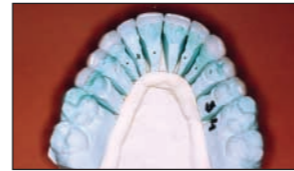


Top view of Impression

Template guide used during preparation and for temporaries

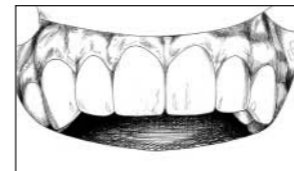


Veneers fabricated by lab



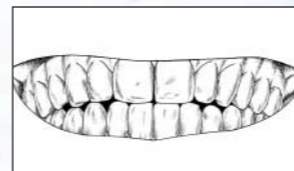
Top view of model

Insertion, one at a time



Front four bonded, not yet polished

All bonded ready for final polish and trim



Finished Product

Satisfied Patient

Implants

Tooth Replacement Therapy with Dental Implants

Dental implants have proven to be safe and predictable replacements for missing teeth. Dental implants can replace a single tooth, several teeth or even a complete dentition restoring comfort, function and aesthetics. These implants can also anchor loose fitting dentures.

Dental implants are surgically placed and allowed to heal for a determined period of time. Bio-compatible and natural-looking components can then be attached to the implants to mirror-image the look and feel of an ideal dentition.

Teeth dominate the smile and ensure preservation of the facial bone structure that prevents premature aging. Restoring lost teeth and bone with dental implants and bone substitutes can be considered a dental "face-lift".

The STEPS of IMPLANT DENTISTRY

- Consultation and diagnosis is performed (standard clinical radiographic examination).
- Treatment plan is designed, location of implants is determined and overall design is agreed upon.
- Implants are surgically placed into the jawbone.
- Abutments are screwed onto the healed implants. The healing period varies.
- Final impressions of implant-supported teeth are taken for fabrication at the lab.
- Preliminary fabricated teeth are inserted onto the abutments in a number of try-in sessions. The number of sessions varies with the complexity of the case.
- Final fabricated teeth are inserted onto the abutments.
- A follow-up maintenance program is designed and implemented.

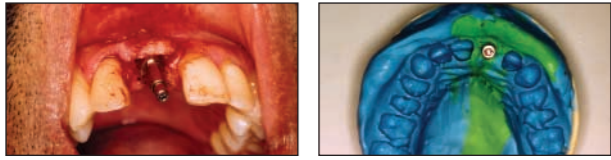
Anterior Implants



4 months after surgical placement

Locate implant through tissue

Anterior Implants - cont.

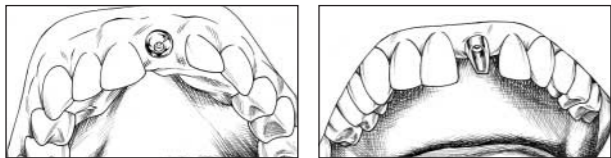


Impression coping on implant

Impression of implant

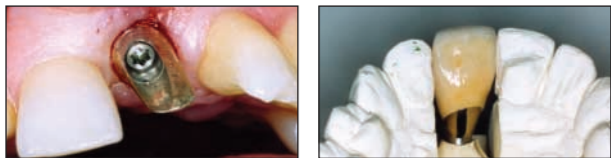


Anterior X-ray



Healing cap while crown is made (temporary tooth is provided)

Custom abutment screwed down



Close-up

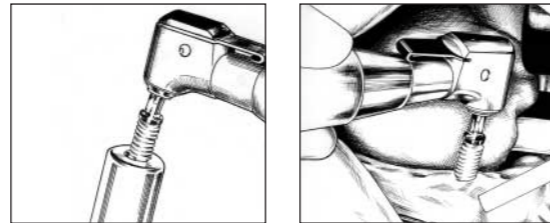
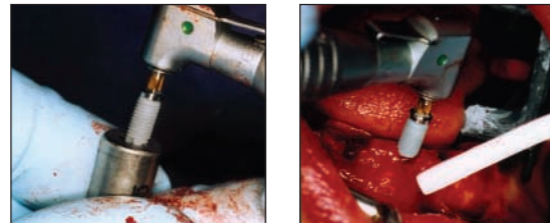
Crown on model

Anterior Implants - cont.



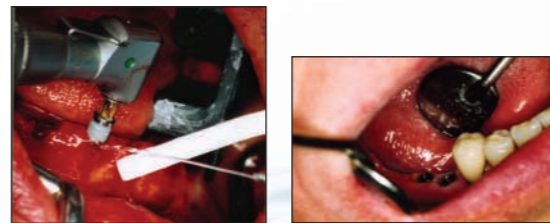
Closeup of crown

Posterior Implants

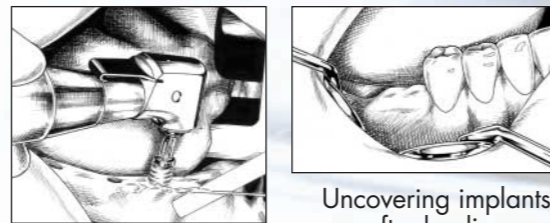


Implant lifted out of vial

Tapping implant into bone



Tapping is water cooled



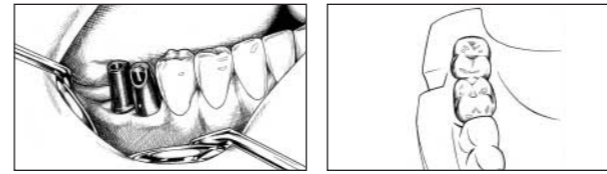
Uncovering implants after healing

Posterior Implants - cont.



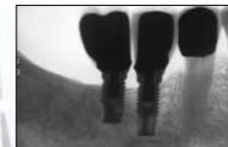
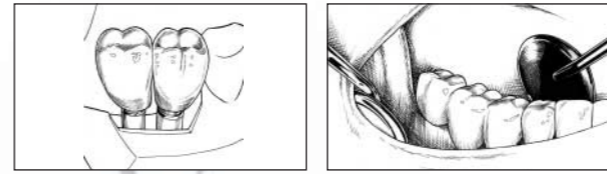
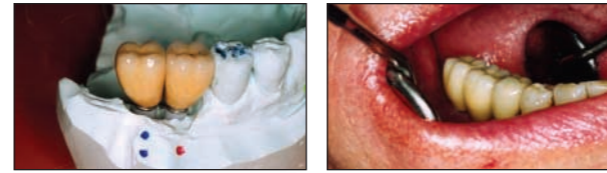
Custom abutments

Top view of crowns of model



Side view

Finished product



Posterior X-ray

DR . ALLAN FOX

Dr Fox's office is located in Cedar Heights Plaza,
635 Markham Road, (ground level on the north
east corner of Markham Road and Lawrence Avenue East),
Scarborough, ON M1H 2A4
Phone: 416-438-6699 Fax: 416-438-5766

Dr. Fox is a fellow of the International Congress of
Oral Implantologists (I.C.O.I.) and is a certified Nobelbio Care User
www.allanfox.ca

**Dental
Implants
& Porcelain
Veneers**

Dr. Allan Fox